

PER ALTA VELOCITÀ SENZA TACCHE

NUTS WITHOUT NOTCHES

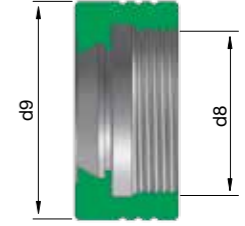


ECCENTRICHE
ECCENTRIC



CONCENTRICHE
CONCENTRIC

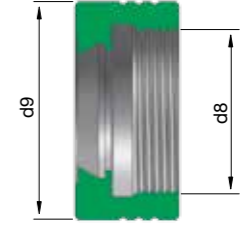
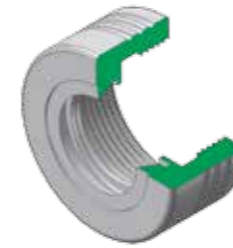
NEW



SENZA TACCHE ECCENTRICA - DX - ECCENTRIC WITHOUT NOTCHES - RIGHT

Cod.	TYPE	d 9	d 8	Cod.	TYPE	d 9	d 8
NUT.16.NF.ST	ERX16	32	M22x1,5	NUT.32.NF.ST	ERX32	50	M40x1,5
NUT.20.NF.ST	ERX20	35	M25x1,5	NUT.40.NF.ST	ERX40	63	M50x1,5
NUT.25.NF.ST	ERX25	42	M32x1,5				

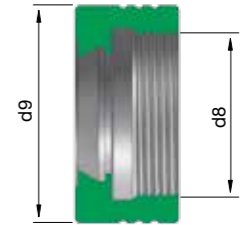
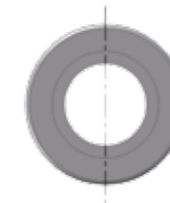
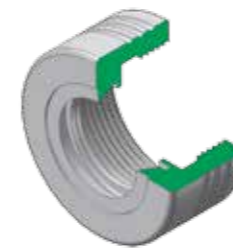
NEW



SENZA TACCHE CONCENTRICHE - DX - CONCENTRIC WITHOUT NOTCHES - RIGHT

Cod.	TYPE	d 9	d 8	Cod.	TYPE	d 9	d 8
NUT.25.NF.C	ERX25	42	M32x1,5	NUT.40.NF.C	ERX40	63	M50x1,5
NUT.32.NF.C	ERX32	50	M40x1,5				

NEW



PER ALTA VELOCITA' CONCENTRICHE - SX - CONCENTRIC WITHOUT NOTCHES - LEFT

Cod.	TYPE	d 9	d 8	Cod.	TYPE	d 9	d 8
NUT.16.NF.C.L	ERX16	32	M22X1,5sin	NUT.32.NF.C.L	ERX32	50	M40X1,5sin